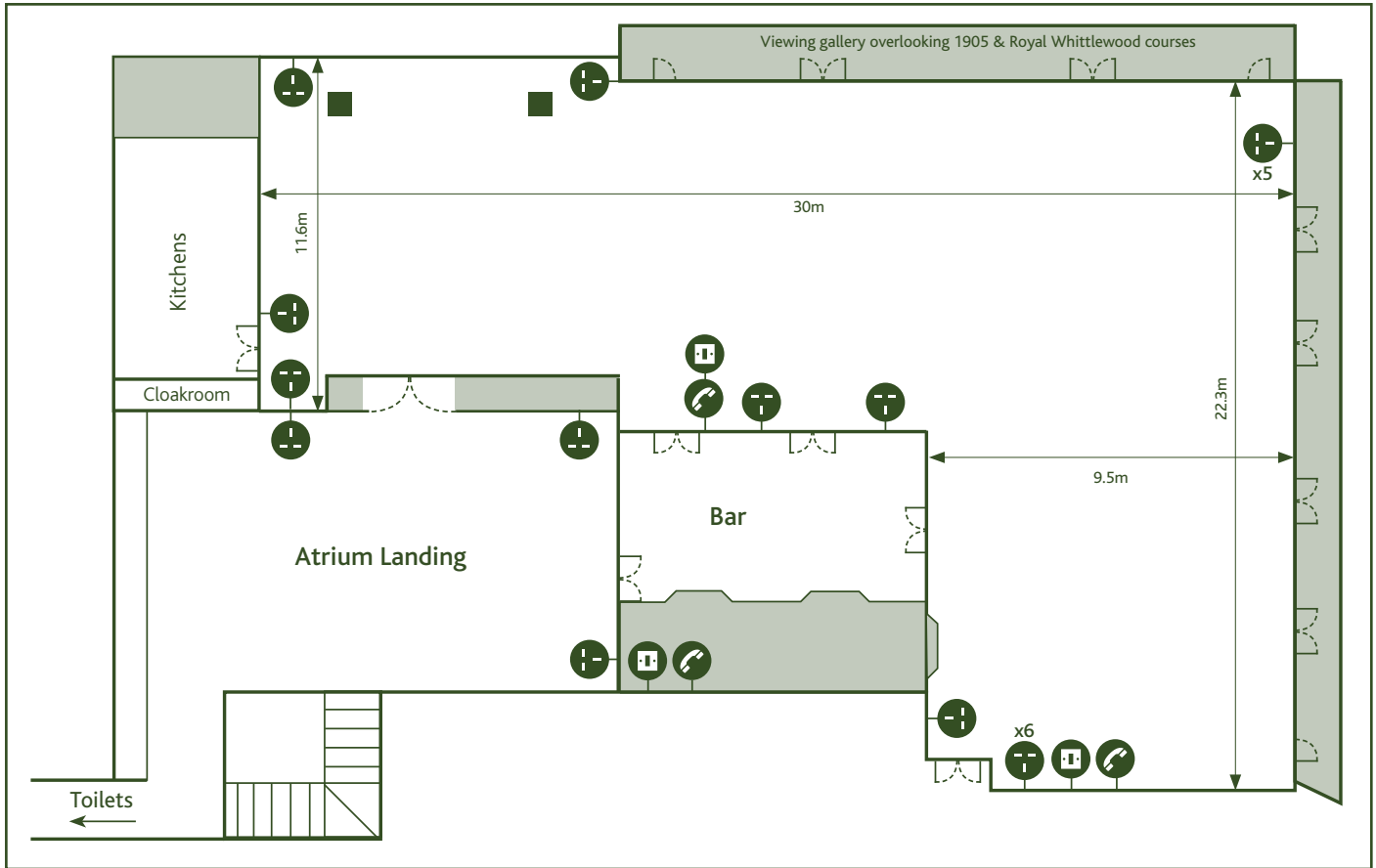


THE ATRIUM (The 1905 Suite)

The Atrium is a very flexible space and can be hired out as one entire room 'The 1905 Suite' or as various room configurations.

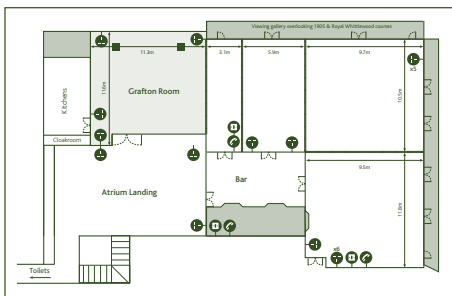
See the reverse of this page for the different configuration dimensions

Room size	30 x 22.3
Total floor size	439.53m ²
Ceiling height	2.9
Dinner dance	300
Dinner only (with stage)	330

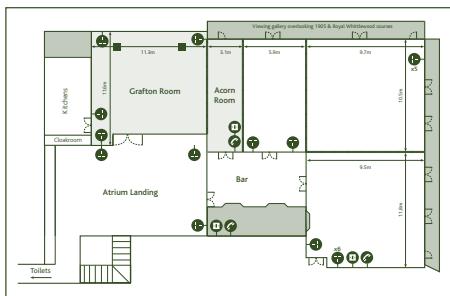


Room Configurations

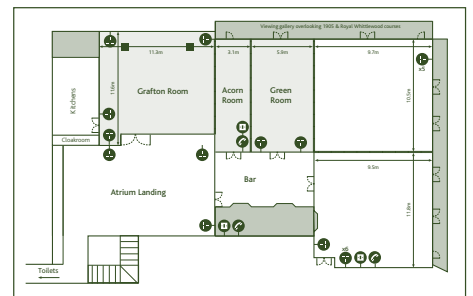
GRAFTON ONLY



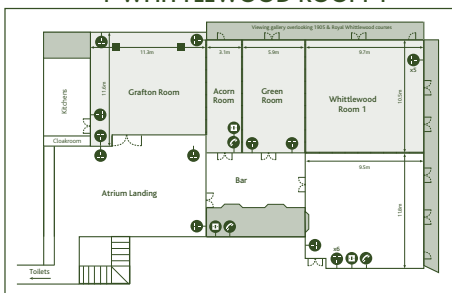
GRAFTON + ACORN



GRAFTON + ACORN + GREEN ROOM

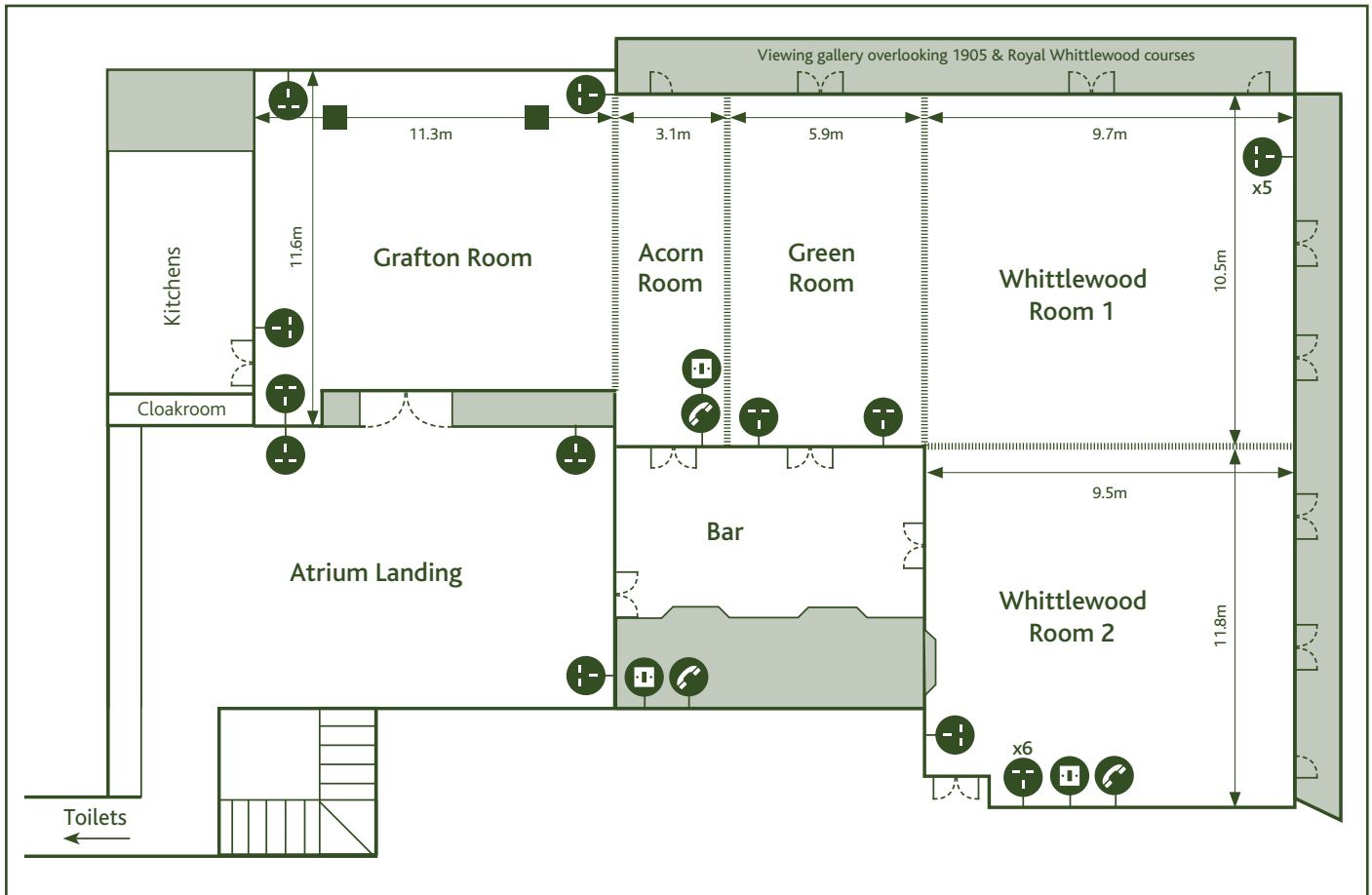


GRAFTON + ACORN + GREEN ROOM + WHITTLEWOOD ROOM 1



GREEN ROOM + WHITTLEWOOD ROOM 1





Room Specification

DIMENSIONS (m)

GRAFTON ROOM

Room size	11.3 x 11.6
Total floor size	131.08m ²
Ceiling height	2.9
Cabaret	90
Theatre	150

ACORN ROOM

Room size	3.1 x 10.5
Total floor size	32.55m ²
Ceiling height	2.9

GREEN ROOM

Room size	5.9 x 10.5
Total floor size	61.95m ²
Ceiling height	2.9





WHITTLEWOOD ROOM 1

Room size	10.5 x 9.7
Total floor size	101.85m ²
Ceiling height	2.9
Cabaret	70
Theatre	150

WHITTLEWOOD ROOM 2

Room size	11.8 x 9.5
Total floor size	112.1m ²
Ceiling height	2.9
Cabaret	70
Theatre	110

KEY

 Light switch	 Power supply	 Telephone
 Partition/Moveable Wall		